



WCO-CTS-CUSCAR

based on

CUSCAR

Cargo report message

UN D.11A S3

Version: 0.5

Issue date: 22/08/2013

Contents

Status indicators.....	3
Usage indicators	3
Introduction.....	4
Branching Diagram	5
Structure.....	6
UNA Service string advice.....	7
UNB Interchange header	8
UNH Message Header	9
BGM Beginning of message.....	10
DTM Date/time/period	11
LOC Place/location identification.....	12
RFF Reference.....	13
NAD Name and address.....	14
TDT Transport information.....	15
LOC Place/location identification.....	17
DTM Date/time/period	18
EQD Equipment details.....	19
SEL Seal number	20
CNI Consignment information.....	21
RFF Reference.....	22
CNT Control total.....	23
LOC Place/location identification.....	24
NAD Name and address.....	25
GID Goods item details.....	27
FTX Free text.....	29
MEA Measurements.....	30
SGP Split goods placement.....	31
DGS Dangerous goods	32
PCI Package identification	34
CST Customas status of goods.....	35
UNT Message trailer.....	36
UNZ Interchange trailer.....	37

Status indicators

Status indicators (M and C) from part of UN/EDIFACT standard indicate a minimum requirement to fulfill the needs of the message structure.

See out below are the indicators and their respective uses:

Value	Description
M	Mandatory This entity must appear in all messages.
C	Conditional This entity is used by agreement between the parties to the transaction

A conditional Status Indicator may be represented by a supporting Usage indicator which is either R, D, O or X.

Usage indicators

Through this document reference is made to indicators (M, R, D, O and X) which are shown adjacent to data items and which dictate for the particular message or set therefore the agreed usage of the data items or entities.

See out below are the indicators and their respective uses:

Value	Description
M	Mandatory Indicates that this item is mandatory in the message
R	Required Indicates that this entity must be sent in this implementation
D	Dependent Indicates that the use of the entity depends upon a well-defined condition or set of conditions. These conditions must be clearly specified in the relevant implementation guideline.
O	Optional

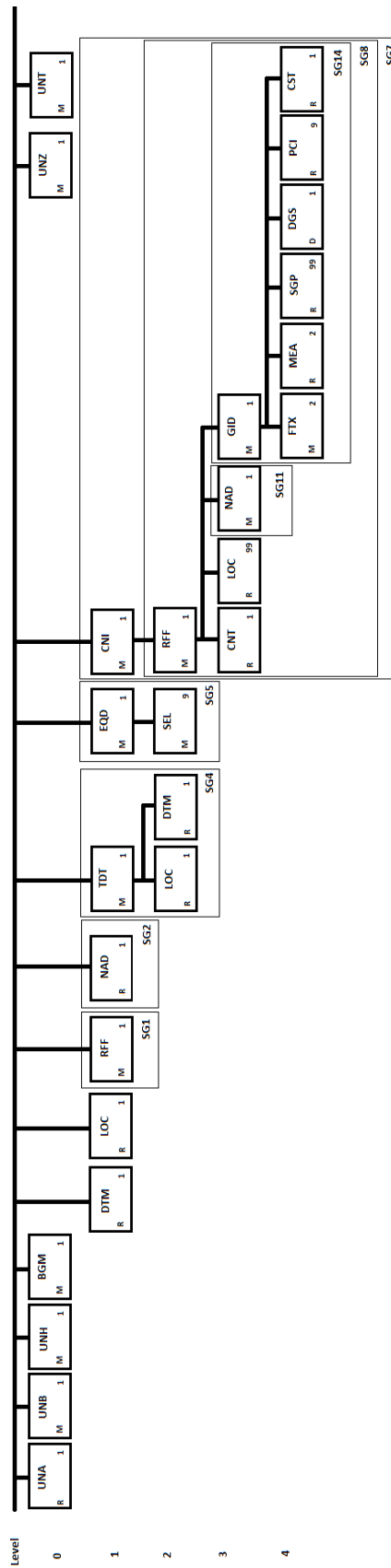
	Indicates that this entity is at the need of discretion of the sender of the message.
X	Not Used Indicates that the entity is not to be used in this message implementation.

Introduction

This document has been developed by WCO to assist interested EDI partners in developing and implementing the UN/EDIFACT CUSCAR message for the Cargo Targeting System.

This cargo report message is based on UN/EDIFACT D.11A 93.

Branching Diagram



Structure

Counter	No	Tag	Segment	St	MaxOcc	Level	Content
0000	1	UNA		R	1	0	Service String Advice
0000	2	UNB		M	1	0	Interchange header
0010	3	UNH		M	1	0	Message Header
0020	4	BGM		M	1	0	Beginning of message
0030	5	DTM		R	1	1	Date/Time/Period
0040	6	LOC		R	1	1	Place/location identification
0060		SG1		O	99	1	RFF
0070	7	RFF	SG1	M	1	1	Reference
0090		SG2		R	99	1	NAD
0100	8	NAD	SG2	R	1	1	Name and address
0160		SG4		M	9	1	TDI-LOC-DTM
0170	9	TDI	SG4	M	1	1	Transport information
0180	10	LOC	SG4	R	1	2	Place/location identification
0190	11	DTM	SG4	R	1	2	Date/Time/Period
0210		SG5		R	9999	1	EQD-SEL
0220	12	EQD	SG5	M	1	1	Equipment details
0260	13	SEL	SG5	M	9	2	Seal Number
0340		SG7		R	9999	1	CNI-SG8
0350	14	CNI	SG7	M	1	1	Consignment information
0370		SG8		R	9999	2	RFF-CNT-LOC-SG11-SG14
0380	15	RFF	SG8	M	1	2	Reference
0390	16	CNT	SG8	R	9	3	Control total
0410	17	LOC	SG8	R	99	3	Place/location identification
0530		SG11		R	99	3	NAD
0540	18	NAD	SG11	M	1	3	Name and address
0630		SG14		M	9999	3	GID-FTX-FTX-MEA-MEA-SGP-DGS-PCI-CST
0640	19	GID	SG14	M	1	3	Goods item details
0670	20	FTX	SG14	M	2	4	Free text
0680	21	MEA	SG14	R	2	4	Measurements
0700	22	SGP	SG14	R	99	4	Splits good placement
0710	23	DGS	SG14	D	99	4	Dangerous goods
0720	24	PCI	SG14	R	9	4	Package identification
0730	25	CST	SG14	R	1	4	Customs status of goods
0890	26	UNT	SG14	M	1	0	Message trailer
0000	27	UNZ	SG14	M	1	0	Interchange trailer

UNA Service string advice

Tag	Name	St	Format	St	Format	Usage
			Standard		Implementation	
UNA						
	Component data element separator					
UNA1		M	an1	M	an1	
UNA2	Data element separator	M	an1	M	an1	
UNA3	Decimal notation	M	an1	M	an1	
UNA4	Release indicator	M	an1	M	an1	
UNA5	Reserved for future use	M	an1	M	an1	
UNA6	Segment terminator	M	an1	M	an1	

Example: UNA:+.? '

UNB Interchange header

Tag	Name	St	Format	St	Format	Usage
			Standard		Implementation	
UNB						
S001	SYNTAX IDENTIFIER	M		M		
0001	Syntax identifier	M	a4	M	a4	
0002	Syntax version number	M	n1	M	n1	
S002	INTERCHANGE SENDER	M		M		
0004	Sender identification	M	an..35	M	an..35	ID of the sender
0007	Partner identification code qualifier	C	an..4	R	an..4	Use the code provided by CTS country
0008	Address for reverse routing	C	an..14	N		NOT USED
S003	INTERCHANGE RECIPIENT	M		M		
0010	Recipient identification	M	an..35	M	an6	Use the format 'CTS-' followed by the 2 characters ISO Alpha code
0007	Partner identification code qualifier	C	an..4	R	an..3	we should use CTS
0014	Routing address	C	an..14	N		NOT USED
S004	DATE/TIME OF PREPARATION	M		M		
0017	Date of preparation	M	n6	M	n6	Format YYMMDD
0019	Time of preparation	M	n4	M	n4	Format HHmm
0020	Interchange control reference	M	an..14	M	an..14	
S005	RECIPIENT'S REFERENCE, PASSWORD	C		N		NOT USED
0022	Recipient's reference/password	M	an..14	N		NOT USED
0025	Recipient's reference/password qualifier	C	an2	N		NOT USED
0026	Application reference	C	an..14	N		NOT USED
0029	Processing priority code	C	a1	N		NOT USED
0031	Acknowledgement request	C	n1	N		NOT USED
0032	Communication agreement ID	C	an..35	N		NOT USED
0035	Test indicator	C	n1	N		NOT USED

Remarks: - the code for 0007 will be automatically generated by CTS and will be provided by email;

Example: UNB+UNOC:3+MSC:MSC+CTS-RO:CTS+130619:2057+XYZW'

UNH Message Header

Tag	Name	St	Format	St	Format	Usage
			Standard		Implementation	
UNH						
0062	Message reference number	M	an..14	M	an..14	Message ID assigned by the message sender The id must be unique it can't repeat in two different files
S009	MESSAGE IDENTIFIER	M		M		
0065	Message type	M	an..6	M	an..6	Should allways have the value CUSCAR
0052	Message version number	M	an..3	M	an..3	Allways value D is expected
0054	Message release number	M	an..3	M	an..3	It is always 11A
0051	Controlling agency	M	an..2	M	an..2	Allways the value UN is provided
0057	Association assigned code	C	an..6	N		NOT USED
0068	Common access reference	C	an..35	N		NOT USED
S010	STATUS OF THE TRANSFER	C		N		NOT USED
0070	Sequence of transfers	M	n..2	N		NOT USED
0073	First and last transfer	C	a1	N		NOT USED

Example: UNH+12345+CUSCAR:D:11A:UN'

BGM Beginning of message

Tag	Name	St	Format	St	Format	Usage
		Standard		Implementation		
BGM						
C002	DOCUMENT/ MESSAGE NAME	C		R		
1001	Document name coded	C	an..3	R	an..3	For manifest upon arrival use value 85. For manifest upon departure use value 833. http://www.unece.org/trade/untidd/d11a/tred/tred1001.htm
1131	Code list identification code	C	an..17	N		NOT USED
3055	Code list responsible agency code	C	an..3	N		NOT USED
1000	Document name	C	an..35	N		NOT USED
C106	DOCUMENT/MES SAGE IDENTIFICATION	C		R		
1004	Document identifier	C	an..70	R	an..70	
1056	Version identifier	C	an..9	N		NOT USED
1060	Revision identifier	C	an..6	N		NOT USED
1125	Message function code	C	an..3	R	an..3	The value of 9 is expected. 9 - original - Initial transmission related to a given transaction.
4343	Response type code	C	an..3	N		NOT USED

Example: BGM+85+Referance number+9'

DTM Date/time/period

Tag	Name	St	Format	St	Format	Usage
			Standard		Implementation	
DTM						
C507	DATE/TIME/PERIOD	M		M		
	Date or time or period function code qualifier	M	an..3	M	an..3	will allways have the value 141 (141 Presentation date of Goods declaration (Customs) Date on which a Goods declaration is presented or lodged with Customs.)
2380	Date or time or period text	C	an.35	R	an..17	the actual date
2379	Date or time or period format code	C	an..3	R	an..3	

Example: DTM+141:20130619154434EDT:304'

LOC Place/location identification

Tag	Name	St	Format	St	Format	Usage
		Standard		Implementation		
LOC						
3227	Location function code qualifier	M	an..3	M	an..3	Always has the value 96 http://www.unece.org/trade/untidd/d11a/tred/tred3227.htm
C517	LOCATION IDENTIFICATION	C		R		
3225	Location identifier	C	an..35	R	an..35	This is used to identify the office of declaration, this is the CTS location in the CTS country where the declaration is made. It has a UN/LOCODE value
1131	Code list identification code	C	an..17	N		NOT USED
3055	Code list responsible agency code	C	an..3	N		NOT USED
3224	Location name	C	an..256	N		NOT USED
C519	RELATED LOCATION ONE IDENTIFICATION	C		N		NOT USED
3223	First related location identifier	C	an..35	N		NOT USED
1131	Code list identification code	C	an..17	N		NOT USED
3055	Code list responsible agency code	C	an..3	N		NOT USED
3222	First related location name	C	an..70	N		NOT USED
C553	RELATED LOCATION TWO IDENTIFICATION	C		N		NOT USED
3233	Second related location identifier	C	an..35	N		NOT USED
1131	Code list identification code	C	an..17	N		NOT USED
3055	Code list responsible agency code	C	an..3	N		NOT USED
3232	Second related location name	C	an..70	N		NOT USED
5479	Relation code	C	an..3	N		NOT USED

Example: LOC+96+JMKIN'

RFF Reference

Tag	Name	St	Format	St	Format	Usage
		Standard		Implementation		
RFF						
C506	REFERENCE	M		M		
1153	Reference code qualifier	M	an..3	M	an..3	This reference qualifier reports the Ship's reference number. Always use ATZ - Reference number assigned by a port authority to the stay of a vessel in the port
1154	Reference identifier	C	an..70	R	an..70	Ship Stay reference
1156	Document line identifier	C	an..6	N		NOT USED
1056	Version identifier	C	an..9	N		NOT USED
1060	Revision identifier	C	an..6	N		NOT USED

Remark: This segment group is specifically used to provide a unique reference number and date time in relation to the entire call. The ship stay reference number will be used for that purpose.

Example: RFF+ATZ:12345'

NAD Name and address

Tag	Name	St	Format	St	Format	Usage
			Standard		Implementation	
NAD						
3035	Party function code qualifier	M	an..3	M	an..2	The qualifier for message sender MS. Expected value is MS
C082	PARTY IDENTIFICATION DETAILS	C		R		
3039	Party identifier	M	an..35	M	an..35	Identifier from the SCAC
1131	Code list identification code	C	an..17	R	an..17	This is an identifier from the SCAC schema. Expected value is 172 - Carrier Code
3055	Code list responsible agency code	C	an..3	R	an..3	Expected value 166 - US National motor Freight Classification Association
C058	NAME AND ADDRESS	C	an..35	N		NOT USED
3124	Name and address description	M	an..35	N		NOT USED
3124	Name and address description	C	an..35	N		NOT USED
3124	Name and address description	C	an..35	N		NOT USED
3124	Name and address description	C	an..35	N		NOT USED
3124	Name and address description	C	an..35	N		NOT USED
C080	PARTY NAME	C		N		NOT USED
3036	Party name	M	an..70	N		NOT USED
3036	Party name	C	an..70	N		NOT USED
3036	Party name	C	an..70	N		NOT USED
3036	Party name	C	an..70	N		NOT USED
3036	Party name	C	an..70	N		NOT USED
3045	Party name format code	C	an..70	N		NOT USED
C059	STREET	C		N		NOT USED
3042	Stree and number of post office box identifier	M	an..35	N		NOT USED
3042	Stree and number of post office box identifier	C	an..35	N		NOT USED
3042	Stree and number of post office box identifier	C	an..35	N		NOT USED
3042	Stree and number of post office box identifier	C	an..35	N		NOT USED
3164	City name	C	an..35	N		NOT USED
C819	COUNTRY SUBDIVISION DETAILS	C		N		NOT USED
3229	Country subdivision identifier	C	an..9	N		NOT USED
1131	Code list identification code	C	an..17	N		NOT USED
3055	Code list responsible agency code	C	an..3	N		NOT USED
3228	Country subdivision name	C	an..70	N		NOT USED
3251	Postal identifcaiton code	C	an..17	N		NOT USED
3207	Country identifier	C	an..3	N		NOT USED

Example: NAD+MS+MAEU:172:166'

TDT Transport information

Tag	Name	St	Format	St	Format	Usage
			Standard		Implementation	
TDT						
8051	Transort stage code qualifier	M	an..3	M	an..3	Code value 20 for Main Carraige
8028	Means transport journey identifier	C	an..17	R	an..17	Voyage number
C220	MODE OF TRANSPORT	C		R		
8067	Transport mode name code	C	an..3	R	an1	Mode of transport value '1' for sea
8066	Transport mode name	C	an..17	N		NOT USED
C001	TRANSPORT MEANS	C		O		
8179	Transport means description code	C	an..8	O	an..8	http://www.unece.org/fileadmin/DAM/cefact/recommendations/rec28/rec28_ecetrd315.pdf 150
1131	Code list identification code	C	an..17	N		NOT USED
3055	Code list responsible agency	C	an..3	N		NOT USED
8178	Transport means description	C	an..17	N		NOT USED
C040	CARRIER	C		O		
3127	Carrier identifier	C	an..17	O	an..17	Carrier identifier
1131	Code list identification code	C	an..17	O	an3	Shold have value '172' stands for Carrier
3055	Code list responsible agency	C	an..3	O	an..3	Expected value 166 - US National motor Freight Classification Association
3126	Carrier name	C	an..35	O	an..35	
8101	Transit direction indicator code	C	an..3	N		NOT USED
C401	EXCESS TRANSPORT ATION INFORMATION	C		N		NOT USED
8457	Excess transportation reason code	M	an..3	N		NOT USED
8459	Excess transportation responsibility	M	an..3	N		NOT USED

	code					
7130	Customer shipment authorisation identifier	C	an..17	N		NOT USED
C222	TRANSPORT IDENTIFICATION	C		R		
8213	Transport means identification name identifier	C	an..35	R	an..35	IMO number of the vessel
1131	Code list identification code	C	an..17	R	an..17	It should be the value '146' - Means of transport identification
3055	Code list responsible agency code	C	an..3	R	n2	Should have the value '54' - IMO (International Maritime Organisation)
8212	Transport means identification name	C	an..70	R	an..70	The actual Vessel Name
8453	Transport means nationality code	C	an..3	O	an..3	Use ISO country code two characters
8281	Transport means ownership indicator code	C	an..3	N		NOT USED
C003	POWER TYPE	C		N		NOT USED
7041	Power type code	C	an..3	N		NOT USED
1131	Code list identification code	C	an..17	N		NOT USED
3055	Code list responsible agency code	C	an..3	N		NOT USED
7040	Power type description	C	an..17	N		NOT USED

Example: TDT+20+Voyagenumber+1+150+MAEU:172:166 :Maersk+
ABC123:146:54:Pacific Heights:US'

LOC Place/location identification

Tag	Name	St	Format	St	Format	Usage
			Standard		Implementation	
LOC						
3227	Location function code qualifier	M	an..3	M	an..3	Transport means itinerary location
C517	Location identification	C		R		
3225	Location identifier	C	an..35	R	an..35	Use UNLOCODE
1131	Code list identification code	C	an..17	N		NOT USED
3055	Code list responsible agency code	C	an..3	N		NOT USED
3224	Location name	C	an..256	N		NOT USED
	RELATED LOCATION ONE IDENTIFICATION					
C519	IDENTIFICATION	C		N		NOT USED
3223	First related location identifier	C	an..35	N		NOT USED
1131	Code list identification code	C	an..17	N		NOT USED
3055	Code list responsible agency code	C	an..3	N		NOT USED
3222	First related location name	C	an..70	N		NOT USED
	RELATED LOCATION TWO IDENTIFICATION					
C553	IDENTIFICATION	C		N		NOT USED
3233	Second related location identifier	C	an..35	N		NOT USED
1131	Code list identification code	C	an..17	N		NOT USED
3055	Code list responsible agency code	C	an..3	N		NOT USED
3232	Second related location name	C	an..70	N		NOT USED
5479	Relation code	C	an..3	N		NOT USED

Remarks: We should have on 3227 port of loading 9 for exit declaration.
We should have on 3227 port of discharge 11 for entry declarations;

Example: LOC+9+BEANT'

DTM Date/time/period

Tag	Name	St	Format	St	Format	Usage
		Standard		Implementation		
DTM						
C507	DATE/TIME/PERIOD	M		M		
2005	Date or time or period function code qualifier	M	an..3	M	an..3	http://www.unece.org/trade/untdid/d11a/tred/tred2005.htm
2380	Date or time period text	C	an.35	R	an..35	
2379	Date or time period format code	C	an..3	R	an..3	

Remarks: We should have 132 for entry declarations: arrival date/time estimated.
We should have 133 for exit declarations: departure date/time estimated.

Example: DTM+132+20121227003030UTC:304'

SEL Seal number

Tag	Name	St	Format	St	Format	Usage
			Standard		Implementation	
SEL						
9308	Transport Unit seal identifier	C	an..35	M	an..35	Seal number
C215	SEAL ISSUER	C		R		
						AA consolidator AB Unknown AC Quarantine agency CA Carrier CU Customs SH Shipper TO Terminal operator
9303	Sealing party name coded	C	an..3	R	an..3	
1131	Code list identification code	C	an..17	N		NOT USED
3055	Code list responsible agency code	C	an..3	N		NOT USED
9302	Sealing party name	C	an..35	N		NOT USED
4517	Seal condition code	C	an..3	N		NOT USED
C208	IDENTITY NUMBER RANGE	C		N		NOT USED
7402	Object identifier	M	an..35	N		NOT USED
7402	Object identifier	C	an..35	N		NOT USED
4525	Seal type code	C	an..3	N		NOT USED

Remark: Repeat SEL for each EQD. One EQD can have more SEL

Example: SEL+KP092633+CU'

CNI Consignment information

Tag	Name	St	Format	St	Format	Usage
			Standard		Implementation	
CNI						
1490	Consolidation item number	C	n..5	R	n..5	
C503	DOCUMENT/MESSAGE DETAILS	C		R		
1004	Document identifier	C	an..70	R	an..70	Bill of lading number of the current consignment
1373	Document status code	C	an..3	N		NOT USED
1366	Document source description	C	an..70	N		NOT USED
3453	Language name code	C	an..3	N		NOT USED
1056	Version identifier	C	an..9	N		NOT USED
1060	Revision identifier	C	an..6	N		NOT USED
1312	Consignment load sequence identifier	C	n..4	N		NOT USED

Remark: It always contains the master bill.

Example: CNI+1+CHNJBmia6586X9'

RFF Reference

Tag	Name	St	Format	St	Format	Usage
		Standard		Implementation		
RFF						
C506	REFERANCE	M		M		
1153	Referance code qualifier	M	an..3	M	an..3	MB - Master Bill of lading HB - House Bill of lading
1154	Referance identifier	C	an..70	R	an..70	The actual House or Master Bill of lading number
1156	Document line identifier	C	an..6	N		NOT USED
1056	Version identifier	C	an..9	N		NOT USED
1060	Revision identifier	C	an..6	N		NOT USED

Remark: In case we do not have a house bill we will repeat CNI data;

Example: RFF+MB:ABC12345'

CNT Control total

Tag	Name	St	Format	St	Format	Usage
		Standard		Implementation		
CNT						
C270	CONTROL	M		M		
6069	Control total type code qualifier	M	an..3	M	an..3	Qualifier for consignment package quantity is 11
6066	Control total quantity	M	n..18	M	n..18	The total number of packages for the consignment
6411	Measurement unit code	C	an..8	N		NOT USED

Example: CNT+11:9'

LOC Place/location identification

Tag	Name	St Format		St Format		Usage
		Standard		Implementation		
LOC						
3227	Location function code qualifier	M	an..3	M	an..3	
C517	LOCATION IDENTIFICATION	C		M		
3225	Location identifier	C	an..35	M	an..35	Use UNLOCODE
1131	Code list identification code	C	an..17	N		NOT USED
3055	Code list responsible agency code	C	an..3	N		NOT USED
3224	Location name	C	an..256	N		NOT USED
C519	RELATED LOCATION ONE IDENTIFICATION	C		N		NOT USED
3223	First related location identifier	C	an..35	N		NOT USED
1131	Code list identification code	C	an..17	N		NOT USED
3055	Code list responsible agency code	C	an..3	N		NOT USED
3222	First related location name	C	an..70	N		NOT USED
C553	RELATED LOCATION TWO IDENTIFICATION	C		N		NOT USED
3233	Second related location identifier	C	an..35	N		NOT USED
1131	Code list identification code	C	an..17	N		NOT USED
3055	Code list responsible agency code	C	an..3	N		NOT USED
3232	Second related location name	C	an..70	N		NOT USED
5479	Relation code	C	an..3	N		NOT USED

Remark: The segment will repeat 6 times for each consignment:

3227 will have the following values:

80 - Place at which the goods are taken over for carriage (operational term), if different from the transport contract place of acceptance. Synonym: Place of origin of carriage. Bill of lading place of receipt;

76 - Original port of loading. The port where the goods were first loaded on a vessel. First port where the consignment was ever loaded on to a ship;

9 - Place of loading [3334] Seaport, airport, freight terminal, rail station or other place at which the goods (cargo) are loaded on to the means of transport being used for their carriage. Port where the consignment was loaded on to the current vessel;

11 - Place of discharge [3392] Seaport, airport, freight terminal, rail station or other place at which goods are unloaded from the means of transport having been used for their carriage. Port where the consignment will be unloaded from the current vessel;

7 - Place of delivery (3246) Place to which the goods are to be finally delivered under transport contract terms (operational term). Final port where the consignment will ever be unloaded from a ship;

20 - Place of ultimate destination of goods. Place where goods will ultimately be delivered. Bill of lading place of delivery;

Example: LOC+80+BEAAB'

NAD Name and address

Tag	Name	St	Format	St	Format	Usage
			Standard		Implementation	
NAD						
3035	Party function code qualifier	M	an..3	M	an..3	Will have one of the following values: CZ - Consignor CN - Consignee FW - freight forwarder NI - notify party
C082	PARTY IDENTIFICATION DETAILS	C		N		NOT USED
3039	Party identifier	M	an..35	N		NOT USED
1131	Code list identification code	C	an..17	N		NOT USED
3055	Code list responsible agency code	C	an..3	N		NOT USED
C085	NAME AND ADDRESS	C	an..35	M		
3124	Name and address description	M	an..35	M	an..35	Use this field only for address
3124	Name and address description	C	an..35	D	an..35	
3124	Name and address description	C	an..35	D	an..35	
3124	Name and address description	C	an..35	D	an..35	
3124	Name and address description	C	an..35	D	an..35	
C080	PARTY NAME	M	an..70	M		
3036	Party name	C	an..70	M	an..70	Use this field to report party name
3036	Party name	C	an..70	D	an..70	Use this field to report party name
3036	Party name	C	an..70	N		NOT USED
3036	Party name	C	an..70	N		NOT USED
3036	Party name	C	an..70	N		NOT USED
3045	Party name format code	C	an..70	N		NOT USED
C059	STREET	C		N		NOT USED
3042	Stree and numbet of post office box identifier	M	an..35	N		NOT USED
3042	Stree and numbet of post office box identifier	C	an..35	N		NOT USED
3042	Stree and numbet of post office box identifier	C	an..35	N		NOT USED
3042	Stree and numbet of post office box identifier	C	an..35	N		NOT USED
3164	City name	C	an..35	N		NOT USED
C819	COUNTRY SUBDUVUSION DETAILS	C		N		NOT USED
3229	Country subdivision identifier	C	an..9	N		NOT USED
1131	Code list identification code	C	an..17	N		NOT USED
3055	Code list responsible agency code	C	an..3	N		NOT USED
3228	Country subdevision name	C	an..70	N		NOT USED
3251	Postal identificaiton code	C	an..17	N		NOT USED
3207	Country identifier	C	an..3	N		NOT USED

Remarks: The segment should appear once for each party involved for each consignment. The first 3124 is mandatory, the others will be used based on the length of the address.

Example: NAD+CZ+Some address data:Some address data+Name of party'

GID Goods item details

Tag	Name	St	Format	St	Format	Usage
			Standard		Implementation	
GID						
1496	Goods item number	C	an..6	R	an..6	Sequence Number
C213	NUMBER AND TYPE OF PACKAGES	C		R		
7224	Package quantity	C	n..8	R	n..8	Number of packages in consignment
7065	Package type description code	C	an..17	O	an..17	Use UN recommendation 21
1131	Code list identification code	C	an..17	N		NOT USED
3055	Code list responsible agency code	C	an..3	N		NOT USED
7064	Type of packages	C	an..35	N		NOT USED
7233	Packaging related description code	C	an..3	N		NOT USED
C213	NUMBER AND TYPE OF PACKAGES	C		N		NOT USED
7224	Package quantity	C	n..8	N		NOT USED
7065	Package type description code	C	an..17	N		NOT USED
1131	Code list identification code	C	an..17	N		NOT USED
3055	Code list responsible agency code	C	an..3	N		NOT USED
7064	Type of packages	C	an..35	N		NOT USED
7233	Packaging related description code	C	an..3	N		NOT USED
C213	NUMBER AND TYPE OF PACKAGES	C		N		NOT USED
7224	Package quantity	C	n..8	N		NOT USED
7065	Package type description code	C	an..17	N		NOT USED
1131	Code list identification code	C	an..17	N		NOT USED
3055	Code list responsible agency code	C	an..3	N		NOT USED
7064	Type of packages	C	an..35	N		NOT USED
7233	Packaging related description code	C	an..3	N		NOT USED
C213	NUMBER AND TYPE OF PACKAGES	C		N		NOT USED
7224	Package quantity	C	n..8	N		NOT USED
7065	Package type description code	C	an..17	N		NOT USED
1131	Code list identification code	C	an..17	N		NOT USED
3055	Code list responsible agency code	C	an..3	N		NOT USED
7064	Type of packages	C	an..35	N		NOT USED
7233	Packaging related description code	C	an..3	N		NOT USED
C213	NUMBER AND TYPE OF PACKAGES	C		N		NOT USED
7224	Package quantity	C	n..8	N		NOT USED
7065	Package type description code	C	an..17	N		NOT USED
1131	Code list identification code	C	an..17	N		NOT USED
3055	Code list responsible agency code	C	an..3	N		NOT USED
7064	Type of packages	C	an..35	N		NOT USED
7233	Packaging related description	C	an..3	N		NOT USED

FTX Free text

Tag	Name	St Format		St Format		Usage
		Standard		Implementation		
FTX						
4451	Text subject code qualifier	M	an..3	M	an..3	AAA -Goods item description [7002] Plain language description of the nature of a goods item sufficient to identify it for customs, statistical or transport purposes. AHZ-Import and export details, specific information provided about the importation and exportation of goods. This values is used for UCR
4453	Free text function code	C	an..3	R	an..3	Has the value 1 -Text for subsequent use. The occurrence of this text does not affect message processing.
C107	TEXT REFERENCE	C		N		NOT USED
4441	Free text description code	M	an..17	N		NOT USED
1131	Code list identification code	C	an..17	N		NOT USED
3055	Code list responsible agency code	C	an..3	N		NOT USED
C108	TEXT LITERAL	C		R		
4440	Free text	M	an..512	M	an..512	Cargo description in first instance UCR in the second instance
4440	Free text	C	an..512	N		NOT USED
4440	Free text	C	an..512	N		NOT USED
4440	Free text	C	an..512	N		NOT USED
4440	Free text	C	an..512	N		NOT USED
3453	Language name coded	C	an..3	N		NOT USED
4447	Free text format code	C	an..3	N		NOT USED

Remark: The segment should be used twice - once for the cargo description and the second time for the UCR;

Example: FTX+AAA+1+Some description'

FTX+AHZ+1+CBE21241932313230'

MEA Measurements

Tag	Name	St	Format	St	Format	Usage
			Standard		Implementation	
MEA						
6311	Measurments purpose code qualifier	M	an..3	M	an..3	Cargo loaded with value AAE - measurement
C502	MEASUREMENTS DETAILS	C		R		
6313	Measured attribute code	C	an..3	R	an..3	value AAW - Gross volume value AAB - Gross weight
6321	Measurement significance code	C	an..3	N		NOT USED
6155	Non-discrete measurement name code	C	an..17	N		NOT USED
6154	Non-discrete measurement name	C	an..70	N		NOT USED
C174	VALUE/RANGE	C		R		
6411	Measurement unit code	M	an..8	M	an..3	value MTQ - for volume value KGM - for weight
6314	Measure	C	an..18	R	an..18	
6162	Range minimum quantity	C	n..18	N		NOT USED
6152	Range maximum quantity	C	n..18	N		NOT USED
6432	Significant digits quantity	C	n..2	N		NOT USED
7383	Surface or layer code	C	an..3	N		NOT USED

Remark: The segment will repeat twice for each consignment item: once for volume and once for mass.

Example: MEA+AAE+AAW+MTQ:40'

MEA+AAE+AAB+KGM:225'

SGP Split goods placement

Tag	Name	St	Format	St	Format	Usage
		Standard		Implementation		
SGP						
C237	EQUIPMENT IDENTIFICATION	M		M		
8260	Equipment identifier	C	an..17	R	an..17	Transport equipment id
1131	Code list identification code	C	an..17	N		NOT USED
3055	Code list responsible agency	C	an..3	N		NOT USED
3207	Country identifier	C	an..3	N		NOT USED
7224	Package quantity	C	n..8	R	n..8	Number of packages per consignment item

Remarks: Used to make connection with the container.

Example: SGP+CBHU654321+210'

DGS Dangerous goods

Tag	Name	St	Format	St	Format	Usage
		Standard		Implementation		
DGS						
8273	Dangerous goods regulations code	C	an..3	R	an..3	Classification id type, expected value IMD
C205	HAZARD CODE	C		R		
8351	Hazard identification code	M	an..7	M	an..7	This is retrieved from IMDG master
8078	Additional hazard classification identifier	C	an..7	N		NOT USED
8092	Hazard code version identifier	C	an..10	N		NOT USED
C234	UNDG INFORMATION	C		R		
7124	UNDG identifier	C	n4	R	n..4	UNDG number: The unique serial number assigned within the United Nations to substances and articles contained in a list of the dangerous goods most commonly carried
7088	Dangerous goods flashpoint description	C	an..8	N		NOT USED
C223	DANGEROUS GOODS SHIPMENT FLASHPOINT	C		N		NOT USED
7106	Shipment flashpoint degree	C	n3	N		NOT USED
6411	Measurement unit code	C	an..8	N		NOT USED
8339	Packaging danger level code	C	an..3	N		NOT USED
8364	Emergency procedure for ships identifier	C	an..6	N		NOT USED
8410	Hazard medical first aid guide identifier	C	an..4	N		NOT USED
8126	Transport emergency card identifier	C	an..10	N		NOT USED
C235	HAZARD IDENTIFICATION PLACARD DETAILS	C		N		NOT USED
8158	Orange hazard placard upper part identifier	C	an..4	N		NOT USED
8186	Orange hazard placard lower part identifier	C	an..4	N		NOT USED
C236	DANGEROUS GOODS LABEL	C		N		NOT USED
8246	Dangerous goods marking identifier	C	an..4	N		NOT USED
8246	Dangerous goods marking identifier	C	an..4	N		NOT USED
8246	Dangerous goods marking identifier	C	an..4	N		NOT USED
8246	Dangerous goods marking identifier	C	an..4	N		NOT USED
8255	Packing instruction type code	C	an..3	N		NOT USED
8179	Transport means description code	C	an..8	N		NOT USED
8211	Hazardous cargo transport authorization code	C	an..3	N		NOT USED
C289	TUNNEL RESTRICTION	C		N		NOT USED

8461	Tunnel Restriction Code	C	an..6	N		NOT USED
1131	Code list identification code	C	an..17	N		NOT USED
3055	Code list responsible agency code	C	an..3	N		NOT USED

Example: DGS+IMD+21+1234'

CST Customs status of goods

Tag	Name	St	Format	St	Format	Usage
			Standard		Implementation	
CST						
1496	Goods item number	C	an..6	R	an..6	
C246	CUSTOMS IDENTITY CODES	C		R		
7361	Customs goods identifier	M	an..18	M	an..18	HS code
1131	Code list identification code	C	an..17	N		NOT USED
3055	Code list responsible agency code	C	an..3	N		NOT USED
C246	CUSTOMS IDENTITY CODES	C		N		NOT USED
7361	Customs goods identifier	M	an..18	N		NOT USED
1131	Code list identification code	C	an..17	N		NOT USED
3055	Code list responsible agency code	C	an..3	N		NOT USED
C246	CUSTOMS IDENTITY CODES	C		N		NOT USED
7361	Customs goods identifier	M	an..18	N		NOT USED
1131	Code list identification code	C	an..17	N		NOT USED
3055	Code list responsible agency code	C	an..3	N		NOT USED
C246	CUSTOMS IDENTITY CODES	C		N		NOT USED
7361	Customs goods identifier	M	an..18	N		NOT USED
1131	Code list identification code	C	an..17	N		NOT USED
3055	Code list responsible agency code	C	an..3	N		NOT USED
C246	CUSTOMS IDENTITY CODES	C		N		NOT USED
7361	Customs goods identifier	M	an..18	N		NOT USED
1131	Code list identification code	C	an..17	N		NOT USED
3055	Code list responsible agency code	C	an..3	N		NOT USED

Example: CST+1+841920'

UNT Message trailer

Tag	Name	St Format		St Format		Usage
		Standard		Implementation		
UNT						
0074	Number of segments in the message	M	n..6	M	n..6	
0062	Message referance number	M	an..14	M	an..14	

Example: UNT+(Number of segments)+(Same Ref as UNH)'

UNZ Interchange trailer

Tag	Name	St	Format	St	Format	Usage
			Standard		Implementation	
UNZ						
0036	Interchange control count	M	n..6	M	n..6	
0020	Interchange control reference	M	an..14	M	an..14	

Example: UNZ+1+(Same ref as in the UNB 0020)'